



THE X5

PROTECTION VR6.

CONTENTS.

HISTORY

HISTORY	06
---------	----

BMW X5 PROTECTION VR6

PROTECTION CLASS	08
PASSENGER CELL	12
PROTECTIVE AND OPTIONAL EQUIPMENT	14
DRIVE SYSTEM AND DRIVING DYNAMICS	16

EQUIPMENT

OPTIONAL EQUIPMENT FOR AUTHORITY VEHICLES	18
M60i PERFORMANCE MODEL	20
INTERIOR DESIGN	22
EQUIPMENT	24
EXTERIOR/INTERIOR COLOUR SCHEMES, WHEELS AND TYRES	26
TECHNICAL DATA	28



PIONEERING SAFETY.

Since being introduced, the BMW X5 has been setting milestones in a class that it itself founded. A multitude of intelligent technologies, outstanding dynamics and supreme comfort typify its character. The BMW X5 is still setting standards in its fourth generation – not only as a sports activity vehicle (SAV), but also as a special protection vehicle.

BMW was the first manufacturer worldwide to introduce factory-integrated protective equipment for SAVs. The new BMW X5 Protection VR6(1) combines outstanding driving performance, exquisite comfort and exclusive equipment with innovative safety concepts for maximum protection in every situation.

With the resistance class VR6 in the new BMW X5 Protection VR6, the special protection vehicle is supplied with customised and integrated protective equipment straight from the factory.

This means the special protection vehicle is virtually indistinguishable from the series-production vehicles in terms of appearance and driving dynamics while offering you a commanding appearance with maximum discretion. This is made possible in particular by an intelligent mix of materials and the special adaptations of the chassis and suspension components. BMW delivers all of these things itself, from concept to realisation. And, thanks to more than four decades of experience in development and production, meets the highest standards in terms of active and passive safety, agility and protective equipment.

(1) The abbreviation "VR6" ("Vehicle Resistance") in the model designation of the new BMW X5 Protection VR6 stands for the resistance class according to which the special protection vehicle is certified (VPAM BRV 2009, version 2). Civilian special protection vehicles are categorised into the resistance classes VR1 to VR10. The vehicle is also certified in accordance with version 2 of the VPAM ERV 2010 guidelines.



EXPERIENCE THE
DIFFERENCE.



SAFETY KNOWS
NO COMPROMISE.

TRUST IS GOOD. EXPERIENCE IS BETTER.

BMW HAS BEEN DEVELOPING AND PRODUCING SPECIAL PROTECTION VEHICLES THAT MEET THE HIGHEST DEMANDS AND STANDARDS FOR OVER 40 YEARS.

One of the most important findings from this experience is that a manufacturer can only develop a car with comprehensive protection with zero compromises if it acts as a **one stop shop** and covers all the aspects of the safety concept itself. This means that the integration of protective measures and the additional weight associated with this are taken into account as early as during the development of the production vehicle.

When you add **innovative materials** and **state-of-the-art development techniques**, this approach enables the perfectly harmonised integration of all protective elements. All protective measures, such as protective glass, underbody splinter protection and shaped parts made of high-strength steel, are integrated without interfering with the discreet exterior appearance of the production vehicle. To ensure **unrestricted driving dynamics** combined with **unrivalled comfort**, a chassis designed for maximum load-bearing capacity is fitted installed at the factory. The series-production restraint systems and airbags also retain their full operability.

In addition to the **strict quality standards** that every special protection vehicle from BMW must meet, the vehicles are tested and certified in accordance with the internationally recognised, official test guidelines of VPAM⁽¹⁾ for ballistics (VPAM BRV 2009, version 2) and blasting (VPAM ERV 2010, version 2) as amended.



2023 BMW X5 Protection VR6 – the consistent further development of the 4th generation of the BMW special protection vehicle.



2004 BMW X5 Security – the first generation of armoured sports activity vehicles (SAVs).



2008 BMW X5 Security and BMW X5 Security Plus – the first generation of the BMW X5 as Security Plus with resistance class VR6.



2014 BMW X5 Security and BMW X5 Security Plus mark the next generation of armoured SAVs.



2019 BMW X5 Protection VR6 – the fourth generation SAV of BMW special protection vehicles.

⁽¹⁾ VPAM stands for Vereinigung der Prüfstellen für angriffshemmende Materialien und Konstruktionen (Association of Testing Bodies for Attack-Resistant Materials and Constructions).

SAFE ALL ROUND.

THE AIM OF THE BMW SAFETY EXPERTS IS TO GIVE YOU THE CERTAINTY OF BEING PERFECTLY PREPARED FOR ANY EMERGENCY.

With the new **BMW X5 Protection VR6**, you can enjoy the unrivalled comfort and luxury of a BMW X5 series-production vehicle and at the same time have the certainty of being fully protected.

The **Bullet-Resistant Vehicles (BRV 2009)** and **Explosive-Resistant Vehicles (ERV 2010)** guidelines are the internationally recognised standard for testing the bullet and blast resistance of specially protected vehicles.

The tests are not only carried out separately on each of the materials used, but the entire vehicle is also subjected to ballistic testing and certified. These ballistic tests are carried out by an independent state testing institute and thus guarantee objective testing in accordance with standardised procedures. The result: whether as a private, authority or escort vehicle, the BMW X5 VR6 is your **confident and reliable** companion.



A (PROTECTION) CLASS OF ITS OWN.



YOU WILL BARELY SEE ITS
SUPERIOR SAFETY, BUT YOU WILL
FEEL IT IMMEDIATELY.

The new **BMW X5 Protection VR6** takes safety to a whole new level. The armouring of the passenger cell consists of high-strength, shaped steel parts and, together with the armoured luggage compartment partition wall fitted as standard, protects against attacks with handguns and long guns up to calibre 7.62 × 39 mm, FeC. The joint area also protects against calibre 7.62 × 39 mm, SC. Both calibres are fired, for example, with the world's most common weapon, the Kalashnikov AK-47.

The **armoured passenger cell** can also withstand side blasts from 15 kg of TNT from a distance of four metres. Furthermore, a reinforced(1) roof provides protection against explosive charges such as the DTG5.

External aluminium underbody armour provides comprehensive protection against blast waves and splinters in the event of attacks with DM51 hand grenades. This underbody armour can be reinforced with fibre composites(1) to additionally withstand an attack with a HG85 hand grenade.



Kalashnikov AK-47

The image shows the X5 VR6 model from 2019.
(1) Equipment optionally available.



ALMOST INVISIBLE. YET HIGHLY EFFECTIVE.

THE SAFETY PRECAUTIONS
IN THE NEW BMW X5
PROTECTION VR6.

State-of-the-art **protection technology** from BMW: the armouring is perfectly adapted to the body of the series-production vehicle. The new BMW X5 Protection VR6 is therefore almost indistinguishable from a series-production vehicle – either from the outside or inside. We take the utmost care with overlapping armouring in sensitive areas, such as door joints, gaps or transitions between the body and windows.

Protective glass including so-called "post-blast protection" is also installed. This offers special protection against secondary attacks, as the front and all safety glass panes of the new BMW X5 Protection VR6 remain in their design position even after a blast. This means that there are no openings between the glass and the body that could be used for another attack. In addition, the anti-leak tank and underbody splinter protection ensure that you are fully protected at all times.



Passenger cell: thanks to comprehensive safety precautions, the armoured passenger cell offers up to four people a genuine refuge.



Anti-leak tank: the outer skin of the tank, encased as standard, closes automatically after bombardment and prevents further fuel leakage.



Multi-layered safety glass: the driver and passengers of the new BMW X5 Protection VR6 are protected by approximately 30-mm thick multi-layered safety glass with an internal polycarbonate splinter protection layer.(2)

Additional floor and roof armouring: All-round safety – the standard underbody splinter protection shields you from attacks with DM51 hand grenades. As an option, the underbody splinter protection can also be reinforced against attacks with the HG85 hand grenade. An optionally available, more heavily armoured roof made of safety steel and fibre composites offers certified protection against drone attacks with DTG5 fragmentation charges (200 g of C4 and over 500 fragmentation bodies) in addition to the standard ballistic protection installed.



RESISTANT DOWN TO THE LAST DETAIL.

Every **component of the safety concept** is realised with the utmost care to ensure that the vehicle and the safety equipment form an optimally coordinated unit. To be able to communicate with people outside the vehicle without having to open the doors or windows, an intercom system is fitted as standard. A panic alarm comes as standard for additional safety. The standard equipment of the new BMW X5 Protection VR6 also includes tyres with emergency running properties. The heated windscreen, which is also included as standard, ensures a clear view and the sun protection glazing(1) guarantees discretion for passengers in the rear.

(1) Equipment optionally available.
(2) The image shows the X5 VR6 model from 2019.

A POWERHOUSE: THE M TWIN POWER TURBO V8-CYLINDER PETROL ENGINE WITH MILD-HYBRID TECHNOLOGY.

DRIVE A SPECIAL PROTECTION VEHICLE THAT FEELS LIKE A SERIES-PRODUCTION CAR.

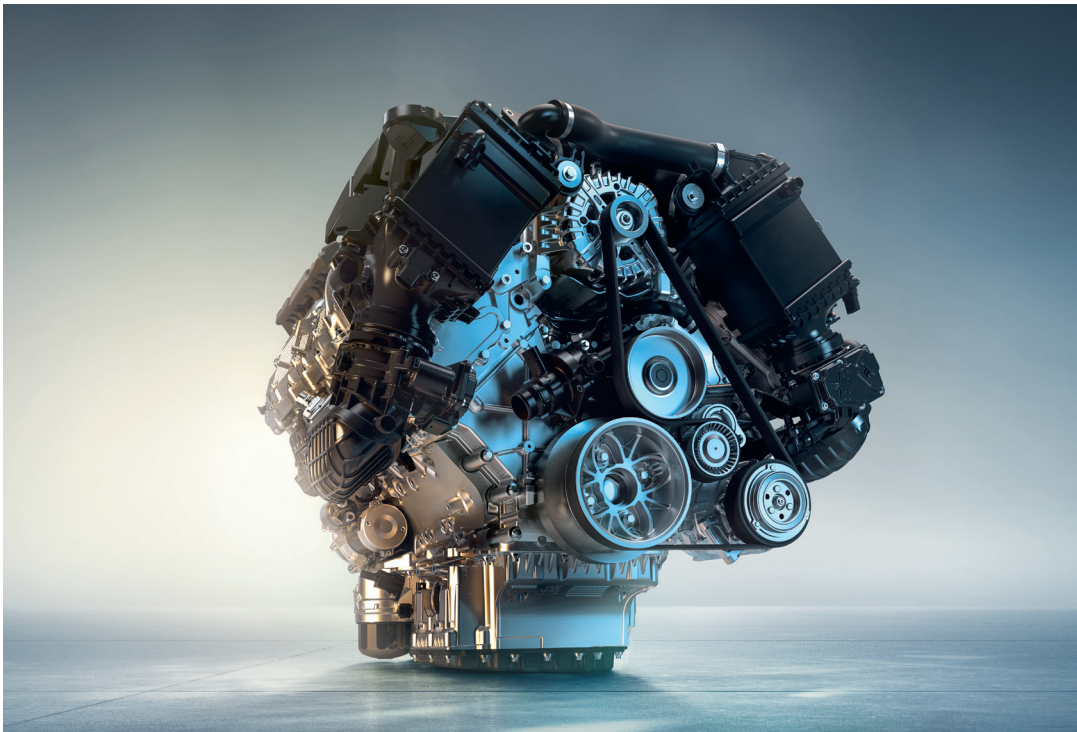
The powerful M TwinPower Turbo V8-cylinder petrol engine, the latest generation BMW xDrive and the chassis specially adapted to the extra weight ensure **typical BMW driving dynamics**.

An irresistible forward thrust and agile handling in every situation define the driving characteristics of the new BMW X5 Protection VR6. An **M TwinPower Turbo V8-cylinder petrol engine** with mild hybrid technology, the latest version of which impresses with even more spontaneous power development and increased efficiency, provides the driving power required for this. The 4.4-litre drive unit utilises the thermodynamic advantages of the cylinder bank-spanning exhaust manifold, the bank-symmetrical turbochargers and the external engine oil cooling. Other new features include a reinforced crankshaft drive, the further enhanced turbocharging with blow-off valve, an oil pump with an increased volume and a weight-optimised oil sump.

In addition, the M TwinPower Turbo V8-cylinder petrol engine is now combined with **48-volt mild hybrid technology** in the form of a crankshaft-driven starter generator. An electrical machine that is integrated into the housing of the 8-speed Steptronic transmission, which has also undergone extensive further development, provides additional drive power of up to 9 kW (12 hp) and a torque of 200 Nm, supporting the combustion engine for a smooth, dynamic and at the same time efficient drive. The energy required for this is stored in a 48-volt battery, which is charged particularly efficiently by means of recuperation during overrun and braking phases.

Overall, the new drive system generates a **maximum output of 390 kW (530 hp)** and a maximum torque of 750 Nm. It accelerates the new BMW X5 Protection VR6 from zero to 100 km/h in 5.9 seconds. The maximum speed of the special protection vehicle is electronically limited to 210 km/h.

Reassuring to know: with the mobility preservation equipment⁽¹⁾ of the new BMW X5 Protection VR6, your drive-ready state is retained even after a crash. The electrical circuit and the fuel supply are not interrupted, which means that the engine is not switched off.



Superior engineering: the **M TwinPower Turbo V8-cylinder petrol engine** with 48-volt mild hybrid technology forms the powerful heart of the new BMW X5 Protection VR6.

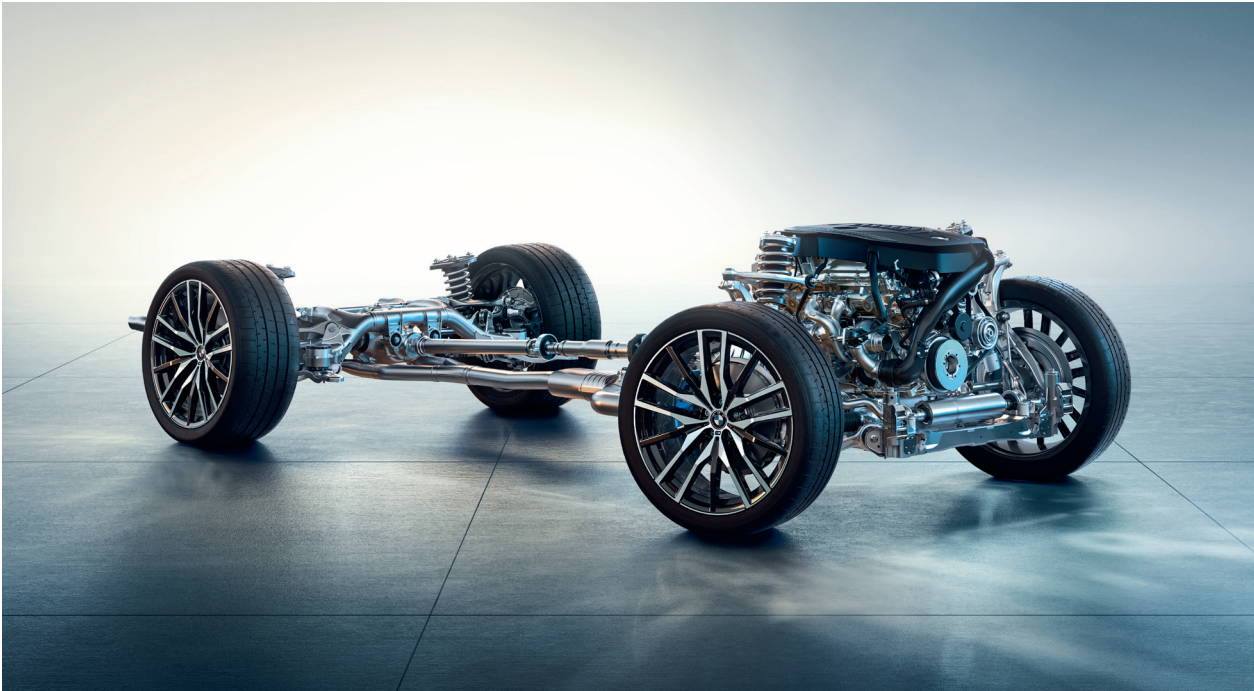


The **M Sport braking system** with four-piston fixed calliper at the front and single-piston floating calliper at the rear in red and with M inscription has larger brake discs and therefore particularly high braking power.



The new BMW X5 Protection VR6 has mixed tyres with **emergency running properties** as standard.

Thanks to the **adaptive M suspension Professional**, including active roll stabilisation, Integral Active Steering and BMW xDrive, the new BMW X5 Protection VR6 is both agile and comfortable to drive.



⁽¹⁾ Equipment optionally available.



The **special signalling system**(1) includes a detachable rotating light, front flashing beacon in the radiator grille and a tone sequence signal. All operating elements are combined in a control centre in front of the gear selector lever. In the event of a failure of the primary power supply, the **emergency engine start**(1) enables an additional battery to be connected for engine starts at the touch of a button.



Additional **flashing lights**(1) on the rear window warn traffic behind you.

The rear lights, which have also been redesigned, set striking accents, particularly in night-time illumination. The L-shape of the LED units for the tail light and brake light, typical of the brand, is mirrored horizontally to create an expressive, harmoniously glowing X motif. The unmistakable lighting effects at the rear are rounded off by pulsating turn indicators.

The **roof aerial**(1) for radio and navigation (TETRA/GSM/GPS) is discreetly installed in the roof fin.

Lowerable door window glass, front: the front side window on the driver's side can be lowered electrically as standard. This equipment is also available for the passenger's side.



OPTIONAL EQUIPMENT FOR OFFICIAL USE.

OPTIONAL EQUIPMENT SPECIALLY DEVELOPED FOR AUTHORITIES AND GOVERNMENT AGENCIES WORLDWIDE.

BMW offers you additional equipment in the new BMW X5 Protection VR6 so that it is always ready for use as an escort vehicle on official business, for formal duties or undercover investigations. BMW offers integrated solutions for a wide range of requirements to cater to your needs.

A **pennant holder**(1) positioned on the left and right is available for sporting official flags.



(1) Equipment optionally available.

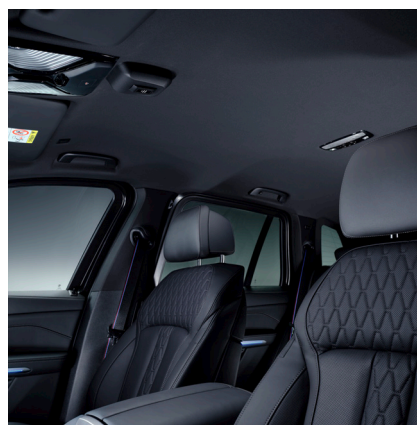
THE NEW BMW X5 PROTECTION VR6.

EXPERIENCE THE POWERFUL FORCE AND UNIQUE DRIVING DYNAMICS OF THE M60i PERFORMANCE MODEL.

Driving pleasure to the power of X: the new BMW X5 Protection VR6 with the top-of-the-range M60i engine combines the best of BMW X with a good dose of BMW M. A design that shows even more bite and a performance that impresses with enormous power and agility. Under the bonnet is a power plant with M TwinPower Turbo technology, which impresses with ultra spontaneous response characteristics, high torque even at low revs and a broad usable speed range. Precisely coordinated, all components work together for one goal: athletic driving characteristics for even more agility.



The **sports seats** can be heated and their new Sensafin surfaces are available in a choice of four colours. The BMW Individual Merino leather trim with extended features and the BMW Individual Merino full leather trim are optionally available in four and three colour variants respectively.



■ **BMW M Anthracite headlining:** in addition to the headlining, the BMW M Anthracite headlining also features anthracite fabric on the trim panels of the body pillars, sun visors and parcel shelf.



■ **BMW M high-gloss Shadowline exterior trim with extended contents:** this optional equipment expands the BMW M High-gloss Shadowline exterior trim with the following features in black chrome: kidney frames, kidney struts, air breather and tailpipe trims.



■ **Door sill cover strip:** the front door sill cover strip with "M60i" model name conveys sporty, luxurious elegance as soon as you open the doors.



■ **M60i model name:** The "M60i" model badge can be found on the right-hand side of the tailgate if desired.

SAFETY DOES NOT MEAN SACRIFICE.

SPACE FOR FOUR PEOPLE WITH EXCEPTIONAL SEAT COMFORT.

Choose from a wide range of equipment options precisely tailored in terms of function and comfort to your new BMW X5 Protection VR6 to give the vehicle your personal touch.

■ The redesign of the cockpit gives the premium ambience in the interior a particularly progressive look. The new BMW X5 Protection VR6 is now also equipped with the fully digital **BMW Curved Display**. It consists of a 12.3-inch information display behind the steering wheel and a control display with a screen diagonal of 14.9 inches under a single glass surface.

■ With the BMW Curved Display, the enhanced **BMW iDrive with "QuickSelect"** has found its way into the BMW X5 Protection VR6. It is based on the BMW Operating System 8.5 and, with a new start screen and the "QuickSelect" quicklist, enables even more intuitive and convenient selection and control of numerous functions.



■ Standard equipment □ Optional equipment

■ The new BMW X5 Protection VR6 is equipped with a **4-zone automatic air conditioning system** as standard, which includes a separate control panel for temperature and ventilation in the rear. At the front, the centre air vents are now flat and almost invisibly integrated into the redesigned instrument panel.



Seat comfort in a class of its own:
□ The **comfort seats**(1), which are also available as optional equipment, are fully electrically adjustable and can be combined with active seat ventilation and a massage function. Other features include an electrically adjustable thigh support, backrest upper section and head restraints. The comfort head restraints also have manual lateral adjustment.
□ Eight massage programmes, each with three intensity levels for muscle activation and relaxation: the **massage function** for the driver and front passenger(1) increases physical well-being through targeted activation or relaxation of the muscles.
□ The **front active seat ventilation**(1) ensures a cool and pleasant seat temperature on hot days and therefore significantly more comfort.



■ The new BMW X5 Protection VR6 offers a total of **four people the best seat comfort** with plenty of legroom. The ballistic safety partition wall, which is set far to the rear, provides a pleasant feeling of space with a particularly high level of safety.



■ **The M leather steering wheel with multi-function button**, M badge and an integrated driver's airbag has a 3-spoke design. With a steering wheel rim in black Walknappa leather with stitching in the M colours and moulded thumb rests, it conveys a sporty, direct steering feel.



(1) The availability of some equipment and features depends on additional optional equipment. Market and product availability may vary.

ADDITIONAL EQUIPMENT.

■ Standard equipment □ Optional equipment

□ With the **CraftedClarity glass application**, the iDrive Controller and the Start/Stop button are made from hand-crafted crystal glass elements.



■ Another new feature is the **ambient light strip with a crystalline surface structure** and **impressive LED backlighting** integrated below the interior trim in the front passenger area. The control panel on the centre console also sports a particularly modern design with additional touch surfaces and a redesigned gear selector lever.



■ The **soft-close function** allows doors to be closed conveniently and securely without much effort or annoying slamming noises. Doors that are not closed properly are automatically pulled shut and secured.



□ The front lights now feature a 35-millimetre-flatter contour. Their arrow-shaped daytime driving light elements also assume the role of turn indicators. Adaptive **matrix LED headlights** are combined with the glare-free **BMW Selective Beam** high-beam headlight as standard(3).



□ Telephony with **wireless charging**(1) offers wireless charging with up to 15 watts of charging power using the Qi charging standard.



■ The **Parking Assistant Plus** makes parking and manoeuvring the car easier for you. Functions like Surround View, Remote 3D View and BMW Drive Recorder provide precise and detailed information about the vehicle's surroundings in every situation.

□ **BMW gesture control** also lets you activate specific functions using gestures in addition to the iDrive Touch Controller.



□ The **sun protection glazing** darkens the rear side windows and the rear window, thereby reducing the heating of the vehicle interior.



□ With the **Travel & Comfort system** including USB-C port, you can securely connect a tablet, smartphone, clothes hanger or folding table to the rear side of a front seat. The flexible system also blends harmoniously into the overall appearance of the vehicle interior(2).



■ The **loudspeaker system – BMW Advanced** and its 205 W of amplifier output has ten loudspeakers to evenly distribute the sound within the vehicle interior.



(1) Inductive charging using the Qi standard possible for suitable mobile phones. Special charging cases are available from Genuine BMW Accessories for selected smartphones without inductive charging function using the Qi standard.
(2) Displays/iPads shown are not included in the delivery specification.
(3) Illustration shows the M lights Shadow Line.

EXTERIOR & INTERIOR COLOUR SCHEMES.

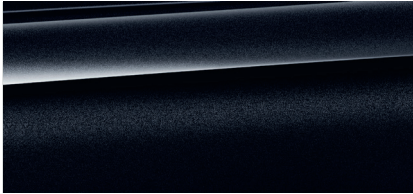
DISCOVER A STARTING SELECTION OF EXTERIOR COLOURS, LEATHER AND INTERIOR TRIMS.

In addition, selected equipment for the exterior and interior is available for the new BMW X5 Protection VR6. Please contact your BMW dealer for more information.

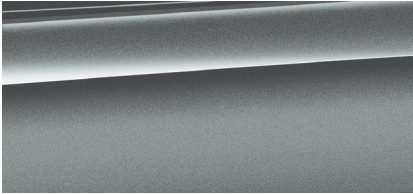
■ Standard equipment □ Optional equipment

EXTERIOR

PAINT



□ Metallic 475 Sapphire Black



□ Metallic C4W Skyscraper Grey



■ 300 Alpine White solid paint

WHEELS AND TYRES



■ 19" light alloy wheels V-spoke style 734 in Reflex Silver with emergency running properties, 9J x 19 wheel size, 265/50 R19 tyres.



■ 20" light alloy wheels, star-spoke style 736 in Ferric Grey with mixed tyres and emergency running properties, front wheel size 9J x 20 and 275/45 R20 tyres, rear wheel size 10.5J x 20 and 305/40 R20 tyres.

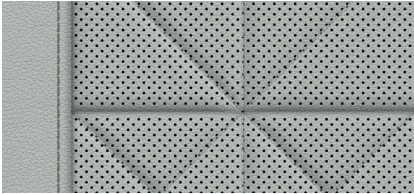


■ 20" light alloy wheels, star-spoke style 740 in M Bicolour Orbit Grey with mixed tyres and emergency running properties, diamond-polished, front wheel size 9J x 20 and 275/45 R20 tyres, rear wheel size 10.5J x 20 and 305/40 R20 tyres.

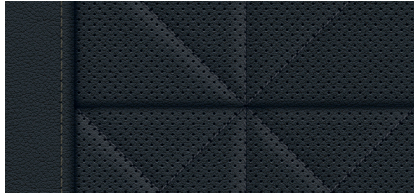
INTERIOR



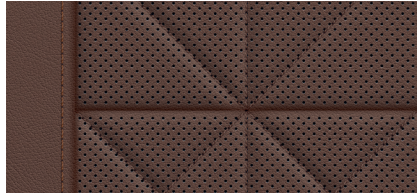
UPHOLSTERY



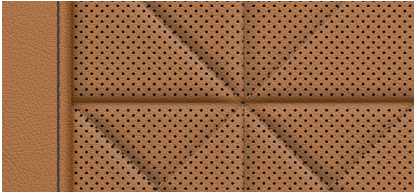
■ Sensafin imitation leather, in Silverstone colour



■ Sensafin imitation leather, in KPSW black colour



■ Sensafin imitation leather, in KPHF Coffee colour

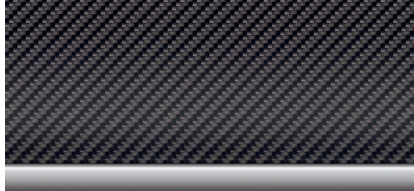


■ Sensafin imitation leather, in KPRI Cognac colour

INTERIOR TRIM



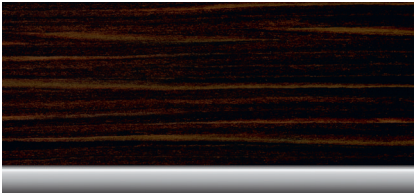
□ 4ML Piano Finish Black, Individual with pearlescent chrome finisher



□ 4MC carbon fibre open-pored, high-gloss black finisher



□ 4KT Poplar Grain Anthracite-Brown open-pored fine-wood trim



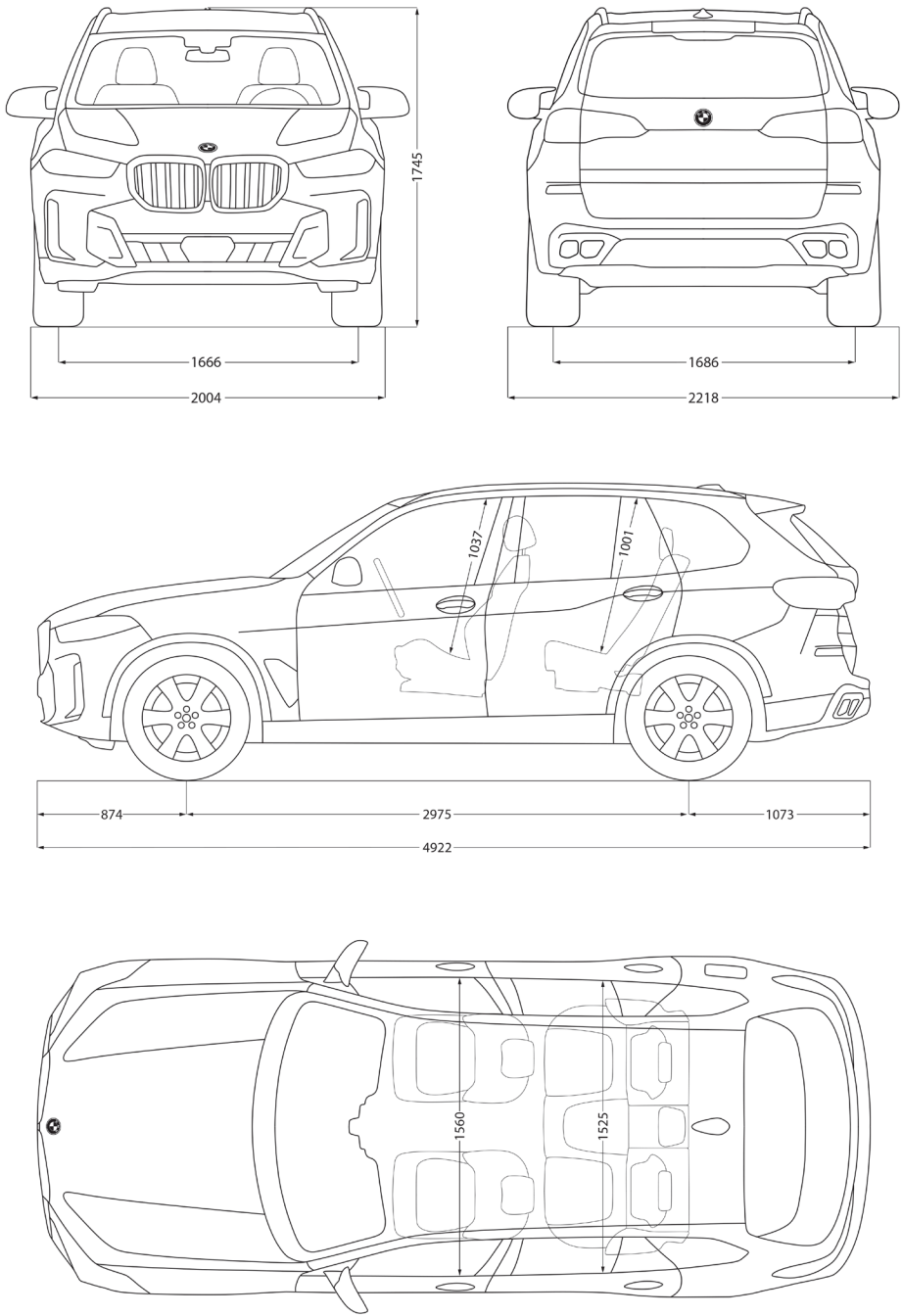
□ 4KR Finition Stripe" fine-wood trim, high-gloss brown



□ 4WW ash grain, high-gloss silver grey

TECHNICAL DATA.

BMW X5 Protection VR6		M60i
Weight		
Unladen weight EC(1)	kg	3280
Permitted total weight	kg	3680
Payload	kg	465
Luggage compartment capacity	l	500
M TwinPower Turbo Motor		
Cylinder/valves	–	8/4
Displacement	cm³	4395
Nominal power/speed	kW (hp)/rpm	390 (530)/5500–6000
Max. torque/rotational speed	Nm/rpm	750/1800–4600
Power transmission		
Drive type	–	All-wheel drive
Standard transmission	–	8-gear Steptronic
Driving performance		
Maximum speed	km/h	210(4)
Acceleration 0–100 km/h	s	5.9
Consumption(2)(3) – the engine meets the EU6 exhaust emission standards		
► Combined	l/100 km	13.6
► CO2 emissions	g/km	307
Efficiency class	–	C
Tank capacity, approx.	l	83
Wheels/tyres		
Tyre size	Front: 275/45 R20 Rear: 305/40 R20	
Wheel size	9J x 20/10.5 J x 20	
Material	Light alloy	



Information regarding driving performance, fuel consumption and CO2 emissions applies to vehicles with a standard transmission.

(1) The EC unladen weight refers to a vehicle with standard equipment and does not include optional equipment. Unladen weight factors assumes a tank 90% full of fuel and a driver weighing 75 kg. Optional equipment can change the weight of the vehicle, the payload and, if it affects the aerodynamics, the maximum speed.

(2) Performance data for petrol engines refers to operation with RON 98 fuel. Fuel consumption figures refer to operation with reference fuel in accordance with Regulation (EU) 2007/715. Fuel grades unleaded RON 91 and higher with a maximum ethanol content of 10% (E10) are permitted. BMW recommends using premium-grade, unleaded RON 95 fuel.

(3) Since 1 September 2017, certain new cars have been type-approved in accordance with the Worldwide harmonised Light vehicles Test Procedure (WLTP), a new, more realistic test procedure for measuring fuel consumption and CO2 emissions. The WLTP replaced the New European Driving Cycle (NEDC), the previous test procedure.on 1 September 2018. Due to the more realistic test conditions, the fuel consumption and CO2 emission values measured according to the WLTP are in many cases higher than those measured according to the NEDC.

(4) Electronically regulated.

BMW X5 Protection VR6:

M TwinPower Turbo engine with M TwinPower Turbo V8-cylinder petrol engine, 390 kW (530 hp), 20" light alloy wheels, star-spoke style 740M in Bicolour Orbit Grey, mixed tyres and emergency running properties, diamond-polished, Carbon Black metallic external colour, comfort seats for driver and front passenger in BMW Individual enhanced leather trim in Merino Black, BMW M Carbon interior trim.

This catalogue shows the models, equipment ranges and configuration options (standard equipment and optional equipment) of the vehicles supplied by BMW AG for the German market.

The equipment ranges and configuration options with regard to standard and optional equipment of the individual models may vary after the editorial deadline for this medium on 17 November 2023 and in other member states of the European Union.

Your local BMW dealer will be happy to provide you with details. We reserve the right to make changes to designs and equipment.

© BMW AG, Munich, Germany. Reproduction in whole or in part only with the written permission of BMW AG, Munich.

96 4885 410 CS-21. Germany 2023.