



# Our Melbourne Our Responsibility

---

Jessica Yang







# Acknowledgement of Country



# Overview

Our Melbourne, Our Vision for a sustainable 2030



## 1 Goal

- Create a Circular Economy
- Accessible, Convenient & Sustainable Communities

## 2 Challenges for Melbourne

- Unsustainable Incentives
- Risks & Dangers in Commuting
- Creating a Community
- Urban Sprawl
- Wastage

## 3 Potential

- Synergies with Charities and Organizations
- Safer & Sustainable Commutes
- Less Wastage, More Growth

## 4 Current Situation

- Diversity
- Infrastructure & Communities
- Outlook





# Melbourne 2023

Population of 5.235 million

## Overview

- Melbourne is one of the most culturally diverse cities in the world, with around 140 cultures represented.
- Over 191 Charities operating in Melbourne

## Mobility

- A comprehensive public transport system enables efficient personal mobility in and around the city.
- Road congestion costs amount to around **\$4.6 billion per year**, forecasted to grow to **\$10 billion by 2030**

## Wastage

- In 2020 Victoria **wasted 2.4 million tonnes of food**, 25% of Australia's food waste
- 1/3 of food produced for consumption contributes to wastage

## Outlook

- Steepest population growth projection in Australia bringing forecasted population to over 6 million by 2030 and overtake Sydney in largest population in Australia

## Public Transport Systems in Melbourne

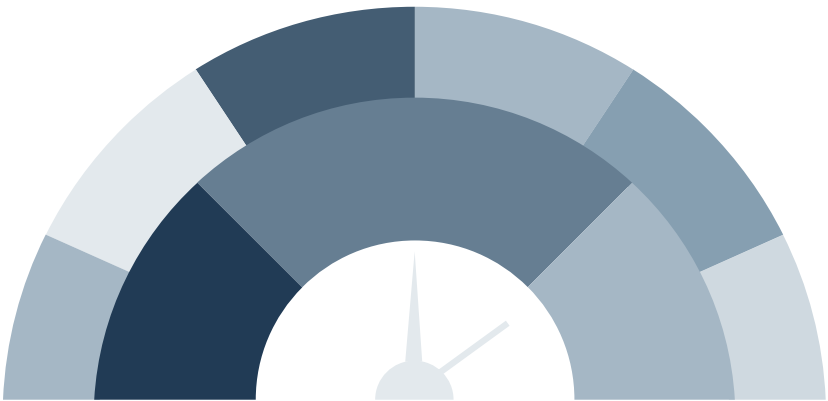




# Mobility

Vehicle emission causing over 11,000 premature deaths in Australia per year, 66,000 active asthma cases, 12,210 cardiovascular hospitalization, 6,840 respiratory hospitalisations

- CityLink Motorway and West gate Bridge has an average of 550,000 cars driving on it every day
- In 2021, if you exclude those who worked from home, over 77% of people drove to work and under 9% caught public transport
- **Road congestion costs \$4.6 billion per year**
- Public Transport has good coverage in the CBD but requires improvement in the suburbs



## Why do Melbournians Drive?

- 12-month parking permit for residents cost \$47 for the first car & \$137 for the second
- Myki costs \$10 for Full fare per day – amounts to \$2,400 for an employee commuting 5 days a week for 48 weeks
- Yearly parking rental can range from \$3,000-4,800 per year – greater convenience for marginally higher cost
- Bike lanes are nonexistent or between parked and driving cars posing danger to commuters



Various health conditions cause by vehicle emissions



1012 thousand barrels of oil consumed in Australia per day



Australia government provided \$11.1bn tax breaks assist fossil fuels FY23



Wasted energy in traffic congestion



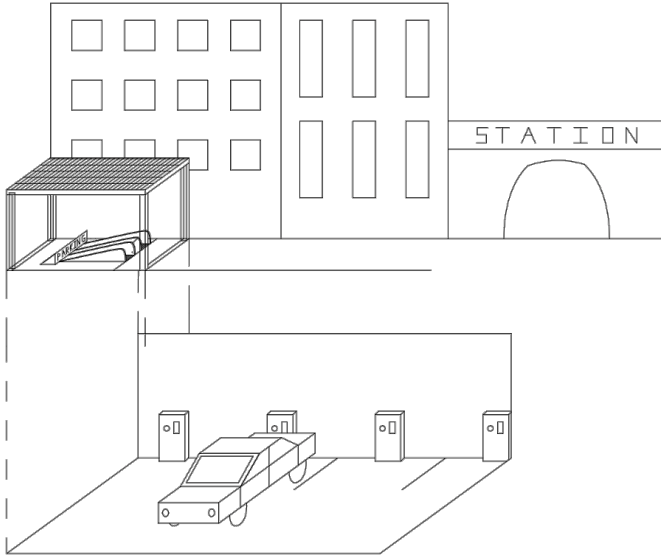
Unnecessary time spent in traffic contributing to pollutants



# Sustainable Mobility

## Public & Private Mobility

### Multi-level Parking



### Restructuring of Roads in the City

- Remove on-street parking to **reduce unnecessary congestion**
- Alter on-street parking space to bikes paths to **promote sustainable commuting & healthy, active lifestyles whilst increasing safety for bikers**
- Limiting cars allowed in the city to delivery vans, emergency vehicles, disadvantaged individuals and Uber & Taxi drivers to **improve air quality & reduce emissions**

### Alter Parking Permits

- Multi-level car parking with **solar roofing** should be built near suburban train stations, within a 15-minute public transport commute from residents in the city & permits granted for the car parking
- **EV chargers** charged by the **solar roofing** within the car parks supply charge whilst parked

### Public Transport Incentive

- Government can repurpose their budget to subsidise public transport rather than fossil fuels



Increases access to bike paths & improves quality of air



EV cars charged whilst parked during the day with solar charging



Clean energy & environment accessible to all, cater to all people with special needs to still access the city



Ensures that only transport reasonably required to enter city is permitted, responsible consumption of energy



Reduce air pollutants



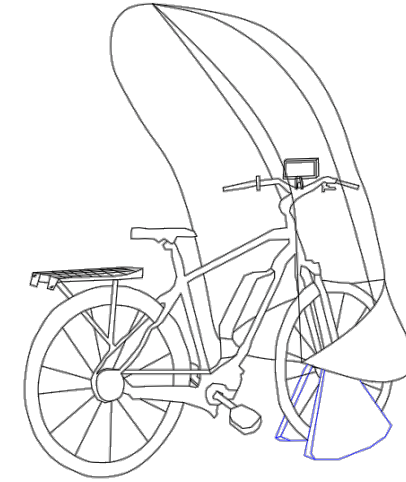
# Sustainable Mobility cont..

## Public Mobility

### Features: Solar Powered Bikes

- Automatic wind / shield cover **protects users** from all weather conditions
- GPS display set through the user app **improves safety** as users can navigate to their destination without pulling out their phones
- Automated indicators connected to GPS ensures **road safety** as other vehicles and pedestrians are aware of the bikes change in direction
- Solar panels charge the bike **harnessing power from the sun** and reduces emissions from replacing batteries in our current electric scooters
- Solar powered bike works like an electric bike, enabling user to **exercise & improve fitness** whilst also **catering** for those who **are unable to bike longer distances** through semi-automation

### Solar Powered Bikes



Promotes exercise tackling obesity in Australia (2/3 overweight)  
Reduces pollutants



Accessible & Convenient form of mobility operating purely from 100% clean energy



Low priced form of transport, anyone with a phone can access, caters to all fitness levels



Energy is not wasted in storage energy like electric scooters & no combustion of fossil fuels, responsibility harnessing power of the sun



Clean energy reduces greenhouse gases released in the air



# Sustainable Mobility cont..

## Private Mobility

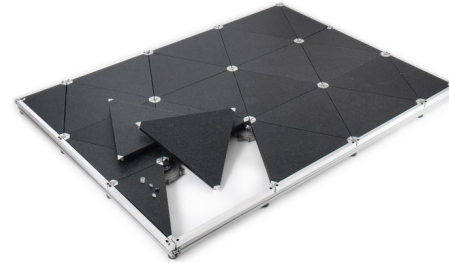
### Kinetic Tiles

At peak times 4-6pm, pedestrian counts reach around 55,000 around Melbourne city, kinetic energy from strolling can be converted to electrical energy to community centers

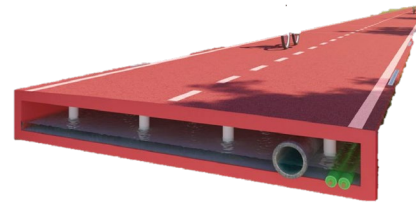
### Features

- Kinetic floor tiles transport vertical movement of footstep to rotating movement to drive generator and energy output – Can be used to **power community centers**
- Consist **of fully recyclable materials**, glass, steel, recycled plastic & electronics
- Utilises otherwise wasted power to increase energy

Kinetic Tiles



Recycled Bike Paths



"Roads are built for people not cars"

### Features: Recycled Bike Paths

- Promotes **active lifestyle** through safe & separate paths for people and bikes
- Paths composed of **100% recycled plastic**
- 'Plastic proven to **be extremely durable material** for infrastructure...compared to asphalt, recycled plastic roads are expected **to last 2-3 times** longer' (**Ernet Packaging**)
- Lighter **reduces CO2 emission** during material **transit**
- Hollow enables **house pipes & cables** run beneath & **store excessive rainwater**



Energy generation through walking generates satisfaction



Harnesses a clean and otherwise wasted energy



Innovative infrastructure to promote a circular economy



Australia government provided \$11.1bn tax breaks to assist fossil fuels FY23



Australia government provided \$11.1bn tax breaks to assist fossil fuels FY23





# Sustainable Mobility cont..

## Link Between Private & Public Mobility

### Energy Generating Turnstile

**Free energy** for public use powered by turnstiles in PTV terminals, schools and stadiums. Further **harnessing wasted energy** in high traffic areas.

#### Features

- Generates energy with each pass
- Similar design & mechanics as wind turbines and mechanical watches

#### Case Study

- a prototype installed in subway station in heart of Paris generated more than 2200 watts per day. Deployed across Paris, Turnstile Turbine generate energy to power an entire line saving **30,000 tons of CO2 per year**

### Energy Generating Turnstile



Energy generation through turnstiles aligns people closer to their community



Harnesses a clean and otherwise wasted energy



Innovative infrastructure to promote a circular economy

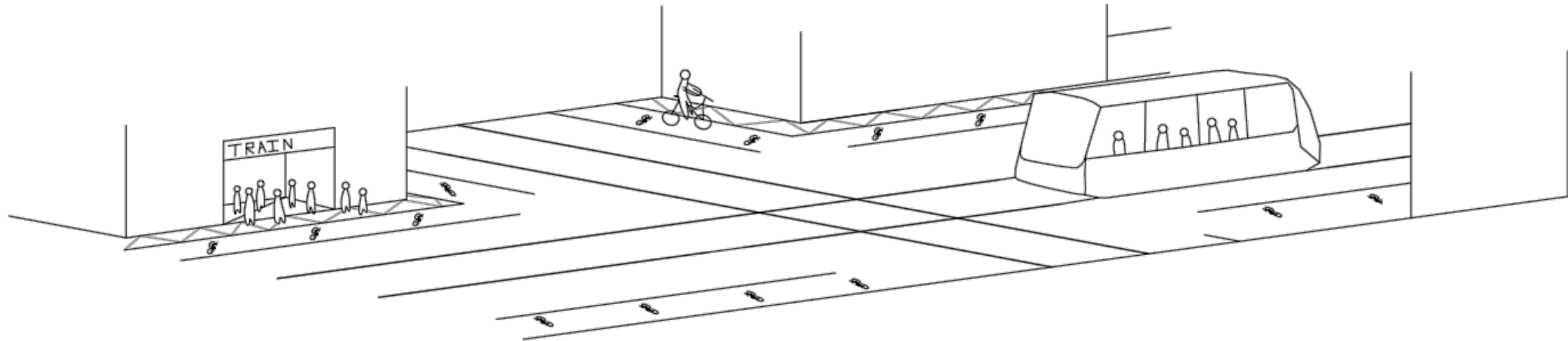


Rather than consume energy to power terminals & gates, harness kinetic energy to generate power



Change energy consumption into clean energy generation

# Mobility in Action





# Social & Community

Ill health due to loneliness costs Australia \$2.7bn each year

- Avg cost associated with loneliness is  
**\$1,565 a year per person**

- **1,508 people are homeless** in  
Melbourne

## Drivers of Social Connectedness

- Nature & frequency of people's social interactions
- Available social supports
- Interpersonal Trust
- Socio-economic advantage

**“1 in 8 people suffer from severe distress”**



However, there are over 191 charities  
in Melbourne that support our people



ST VINCENT'S  
FOUNDATION



FareShare



Care



goodFriday  
appeal  
THE ROYAL CHILDREN'S HOSPITAL



11.9% of Melbourne  
population is under  
the poverty line of  
\$62.70 per week



1/3 Households  
suffer from food  
insecurity



1/8 suffer from  
'severe distress'



Over a quarter of  
Australians have  
poor financial  
literacy



Women spend 9  
hours a week more  
than men on unpaid  
work



Require greater  
access to clean  
sensitisation for  
those without a  
home



Greater  
unemployment rate  
of 7.6% compared to  
national average



Weak support of  
government with  
many nonprofits



# Community

15 – minute cities to improve personal mobility

## Features of Community Centres

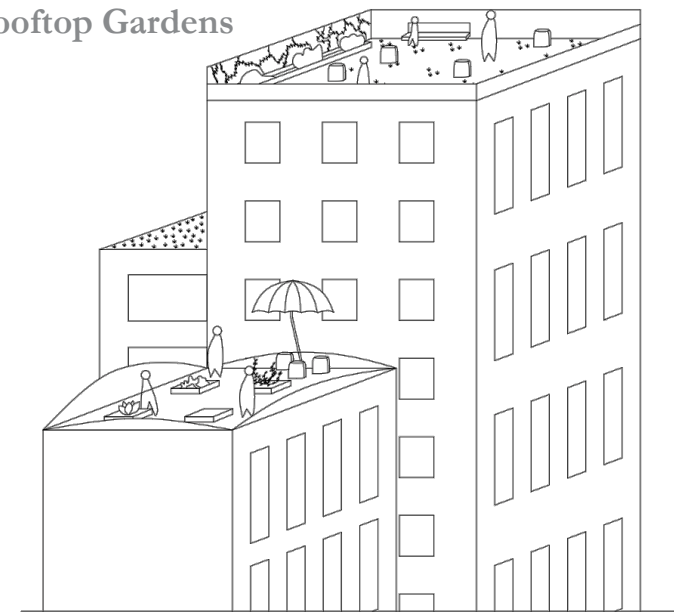
### Gardens

- Rooftop Community Garden to provide **fresh produce** for those in need

### Education

- Provide financial education and to improve **financial literacy & alleviate financial burden**
- Gender equality & young leader programs to **create harmony** between citizens
- Mentorship events to provide **all individuals access to industry** & discover available employment opportunities

## Rooftop Gardens



### Hardship

- Provide access to showers and hygiene facilities
- Community stores set up to distribute leftover food & second-hand clothing, books & furniture



Enable access to education, sanitation & clothing to provide to equalize footing in the workforce



Redistribution & Collection of leftover food from restaurants & cafes



Communal identify through being associated in programs & clubs



Over a quarter of Australians have poor financial literacy



Empowering women through sticking together



Access to communal facilities such as showers & laundry services & clean water



Access to communal facilities such as showers & laundry services & clean water





# Community

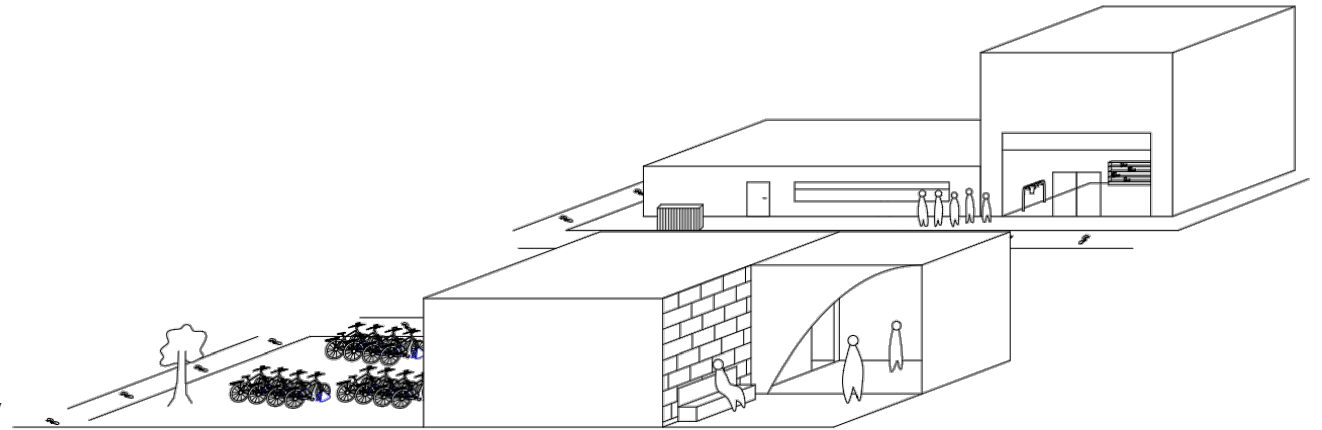
Supporting & Growing Charities & Entrepreneurs

## Open Office Spaces for Sharing & Growth

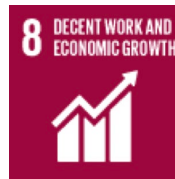
### Features

- Monthly held **innovation lab** competitions to spark idea generations in sustainability
- Business development for entrepreneurs & charities to **further their missions**
- Provide working spaces to support the work of upcoming entrepreneurs
- Create a **communal mission** & standard of creating a sustainable city by 2030
- Joint ventures with NGOs to attain the same goals

## Community Centers



Nonprofits can learn from industry leaders in how to scale their businesses, the basics of business development



New innovative solutions generate new job opportunities & the sharing of information accelerates the growth of these upcoming organisations



Enabling the government to collaborate with business leaders to create strong institutions capable of tackling change



Charity that provides opportunity to people experiencing homelessness & disadvantage



Connects people experiencing homelessness through free laundry, showers & conversations

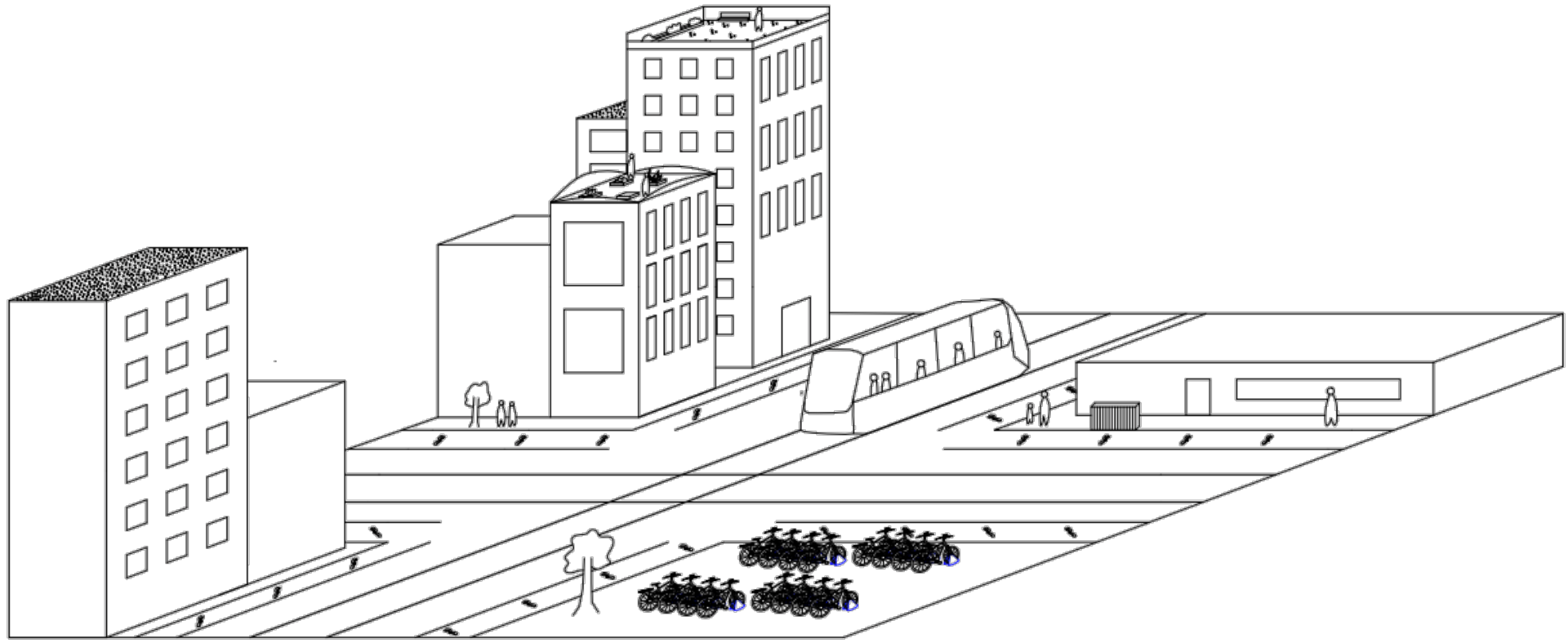


Food rescue charity dedicated to combating food wastage and alleviating hunger

# Our 15 Minute City



Mobility & Community Incorporated







# Wastage

In FY18 Melbourne residents generated over 40,000 tonnes of waste of which only 25% was recycled

## Hard Waste

- In FY20 **112,000 hard waste** collected in Victoria, only 20,200 tonnes recycled
- **Average household produced 51kg of hard waste**

## Food Wastage

- Food waste in Australia amounts to more than 7.6 million tonnes, costing over \$36.6 billion despite **70% still perfectly edible**
- 10% of greenhouse gas emission come from food produced = 17.5 million tonnes of CO2 for Australia each year
- 1/3 of households are throwing out one shopping bag of food waste per week



Energy waste in Australia amounts to  
**\$222 million** each year

## Why are we wasting food?

- 43% don't know how to reduce their wastage
- 25% get bored with the same meals
- 18% struggle to cook food before expiry



Energy wastage increases unnecessary demand increases pricing



Melbourne is creating more waste than we are sorting



Wastage is contributing to global temperature rises – hottest summer in 2024



Ocean absorbing 93% of excess heat, getting warmer, more acidic and less oxygenated



Greater protection of native flora required



Work with organization to create sustainable solutions



# AI as the frontier for waste reduction

Mobilising our Consumption habits

## Features of Energy Optimisation Machine Learning Software

- Analyses energy usage in buildings, fridges & other infrastructure & sets temperature or usage at optimal levels for health
- ie. Often fridges set at lower temperature than what is required / desired
- ie. Exergenics optimize chilled water plant systems energy reduction of 20.3%



**exergenics**

## Self-Sorting Bins

- Often in Melbourne only the general waste bin is supplied
- **94% of us are messing up recycling**

### Features

- AI driven recognition system that **automatically sorts waste**
- Compresses waste to fit more in
- Populates **statistics on wastage** & enables monitoring of waste

## Self-sorting Bins



Optimising energy usage to reduce wastage



AI powered bins & energy optimization to create a circular economy



Reduce CO2 emissions



Effectively manage wastage to reduce litter



# Our Environment

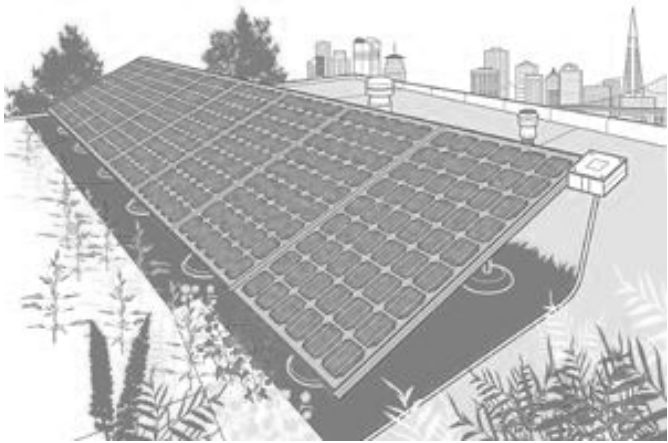
Harnessing the power of Melbourne

## Green Roofing Solar Panels

### Features

- Solar panels on green roof reduces surface temperature up to 20 degrees during Summer, improve output by 3.6%
- Green roof **absorbs greenhouse gases**
- **Increases level of biodiversity**
- Reduce stormwater drains and reduce impact of flooding
- Provides **insulation** to the buildings

## Solar Green Roofing



## Vertical Gardens



## Vertical Gardening in Community Centers & Office Buildings

### Features

- Vertical gardens **improve the air quality** inside & outside buildings
- Native flora is incentivized
- Improves community as individuals work together to garden



Assists conversion to renewables as more solar energy harnessed



Creates more green spaces to absorb greenhouse gases



Absorb greenhouse gases & production of renewables



Decreases the burden on the ocean to absorb our waste



More greenery promotes increase biodiversity



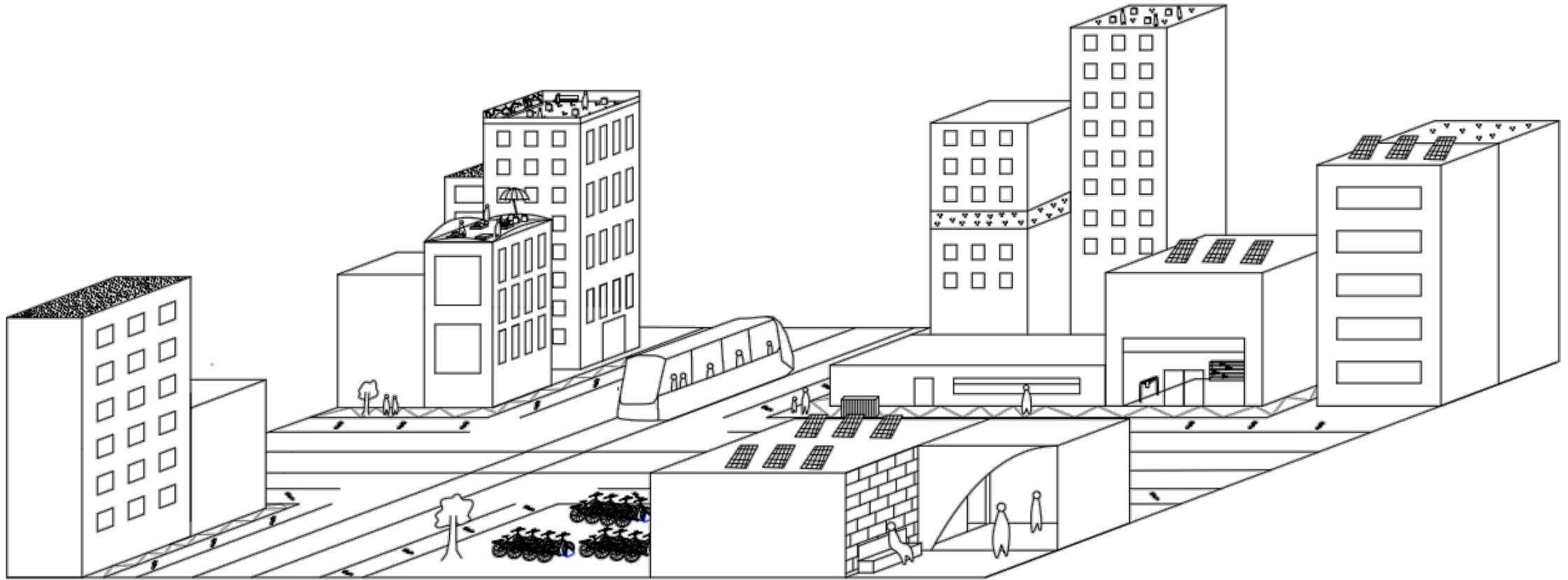
Individuals work together & stronger sense of community





# Melbourne 2030 as a 15-minute circular economy

Daily amenities within a 15–20-minute commute & Materials are regenerated





# References

[https://australasiantransportresearchforum.org.au/wp-content/uploads/2022/05/ATRF2021\\_Resubmission\\_40-1.pdf](https://australasiantransportresearchforum.org.au/wp-content/uploads/2022/05/ATRF2021_Resubmission_40-1.pdf)

<https://energy-floors.com/how-do-kinetic-floor-tiles-work/>

[https://www.melbourne.vic.gov.au/parking-and-transport/parking/parking-permits/residential-parking-permits/Pages/resident-parking-permits-for-all-other-areas.aspx#:~:text=%E2%80%8BFirst%20permit%20issued%20at,%2Dmonth%20permit\)%3A%20%24137.](https://www.melbourne.vic.gov.au/parking-and-transport/parking/parking-permits/residential-parking-permits/Pages/resident-parking-permits-for-all-other-areas.aspx#:~:text=%E2%80%8BFirst%20permit%20issued%20at,%2Dmonth%20permit)%3A%20%24137.)

<https://www.theurbandeveloper.com/articles/melbourne-moves-ahead-to-become-australias-biggest-city>

<https://www.ptv.vic.gov.au/tickets/fares/metropolitan-fares/>

[https://profile.id.com.au/australia/travel-to-work?WebID=270#:~:text=In%202021%2C%20there%20were%20129%2C013,%2C%20motorbike%2C%20or%20truck\).](https://profile.id.com.au/australia/travel-to-work?WebID=270#:~:text=In%202021%2C%20there%20were%20129%2C013,%2C%20motorbike%2C%20or%20truck).)

<https://sidespace.com.au/media/a-car-free-cbd-melbourne-s-plans-for-pedestrian-streets>

<https://www.theguardian.com/society/2021/nov/19/ill-health-due-to-loneliness-costs-australia-27bn-each-year-report-suggests>

<https://profile.id.com.au/melbourne/employment-status>

<https://www.news.com.au/finance/money/costs/survey-reveals-australians-waste-222-million-each-year-on-energy/news-story/df89f2533fba3baaea0b53dd6784faa4>

<https://participate.melbourne.vic.gov.au/waste-resource-strategy#:~:text=As%20our%20city%20continues%20to,of%20waste%20in%202017%2D18.>

<https://www.foodbank.org.au/food-waste-facts-in-australia/?state=vic>

<https://www.theguardian.com/australia-news/2022/sep/30/food-waste-from-australian-households-tops-2k-a-year-study-finds>

<https://www.uts.edu.au/news/tech-design/green-roof-or-solar-both-best>

<https://www.scribd.com/document/460585171/ElectricityGeneratingTurnstile-Edit-docx>