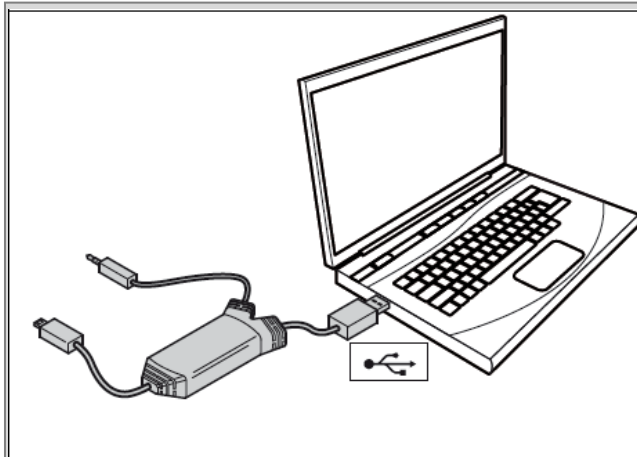


# Original Accessories. Software Update. Snap-in adapter



Please connect the adapter cable with your computer.

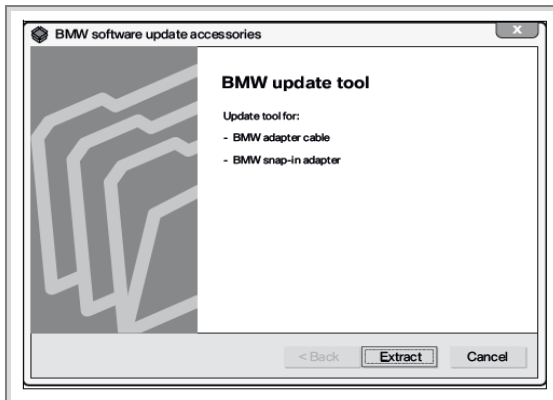


Please enter the web-address:  
[bmw.com/bluetooth](http://bmw.com/bluetooth)

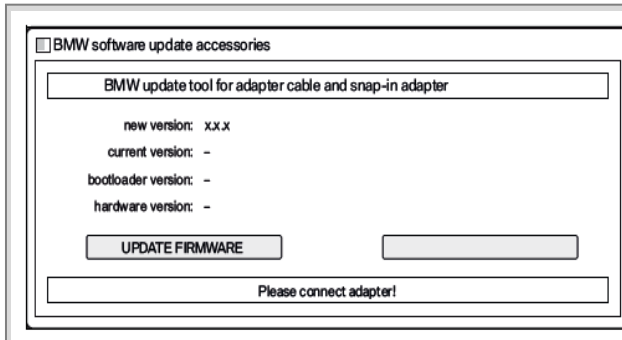
Then click on the tab "Update Accessories".

On the webpage you will find a description of the software update of the accessories. After accepting the terms and conditions of use, the software update can be started.

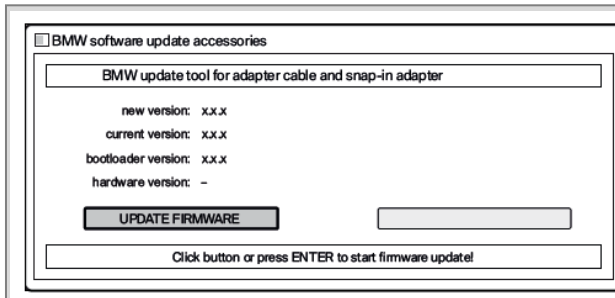
## Software Update für Windows XP, 7 und 8



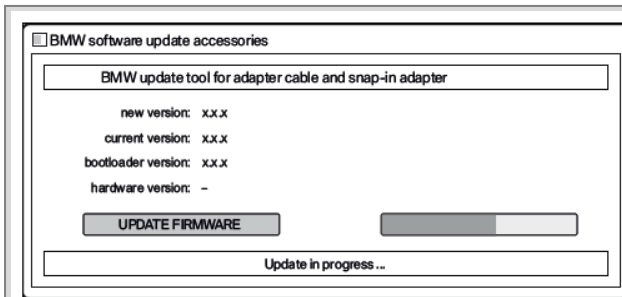
Please click "Extract" to start the process.



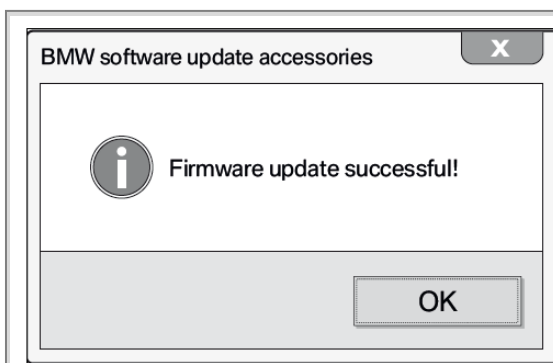
If your adapter cable is not already connected to your computer, please connect it now.



Then click the button "Update Firmware" or press ENTER to start the software update.



Wait until the update is completed.



This message appears when the update is finished.

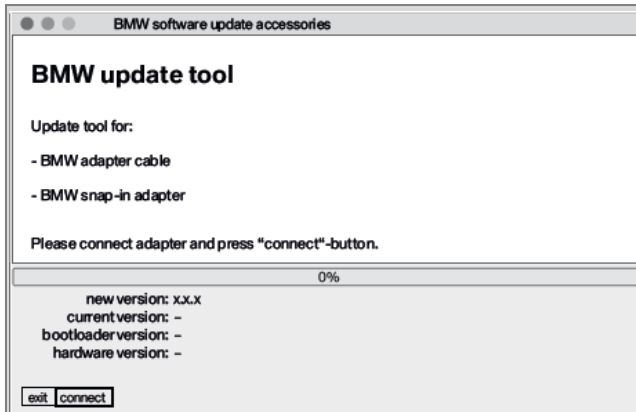
Press "OK".

The update is now complete.

## Software Update für Mac ab OS10.8

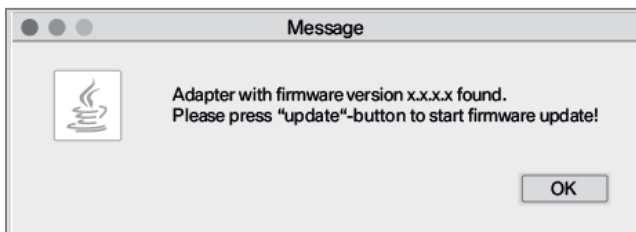


Click the button "Open".

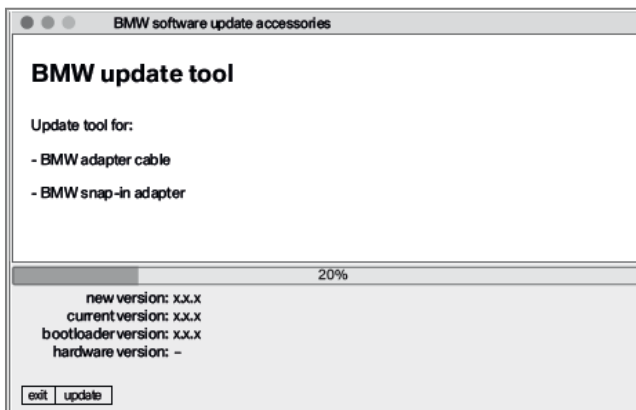


If your adapter cable is not already connected to your computer, please connect it now.

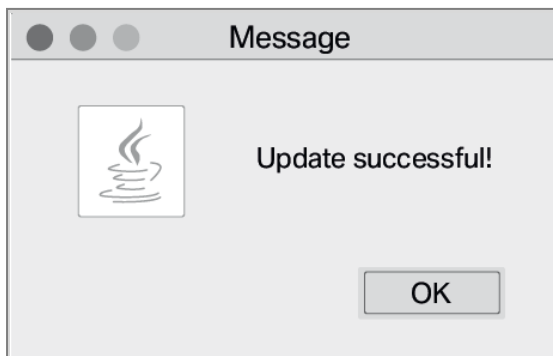
Then click the button "connect".



Then click the button "OK".



Wait until the update is completed.



This message appears when the update is finished. Press "OK".

The update is now complete.