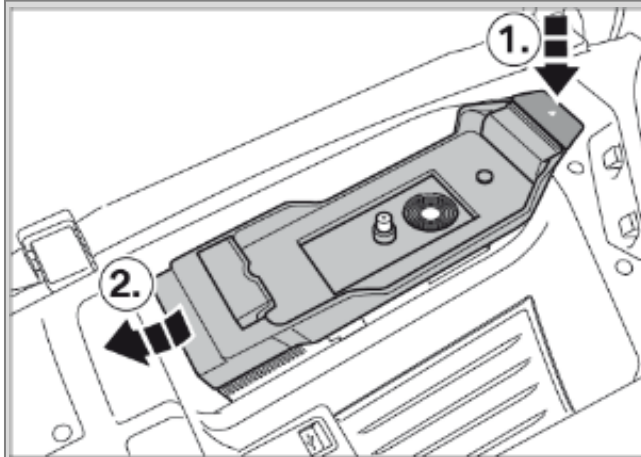
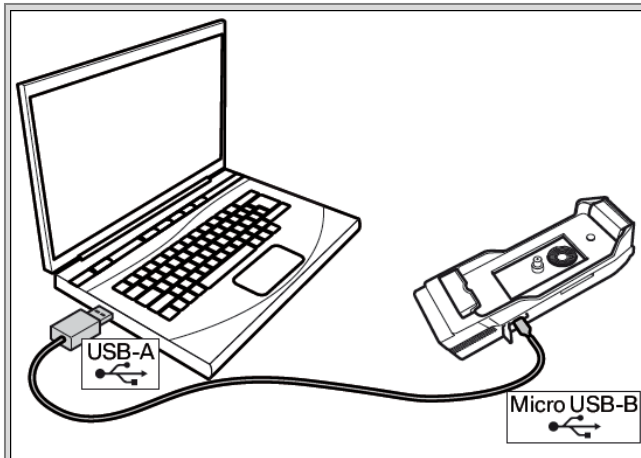


Original Accessories. Software Update. Snap-in adapter



Please remove the snap-in adapter from your car.



! To avoid damaging the circuit board when inserting/removing the micro USB connector do not wiggle the micro USB connector (keep it as straight as possible).

Then connect the snap-in adapter with your computer.

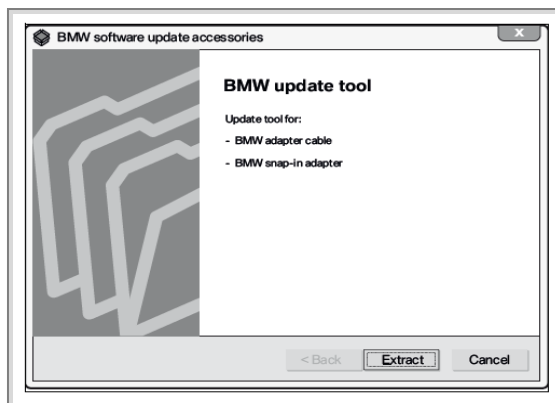
Please note that the required cable (USB-A to Micro USB-B) is not included in the delivery.



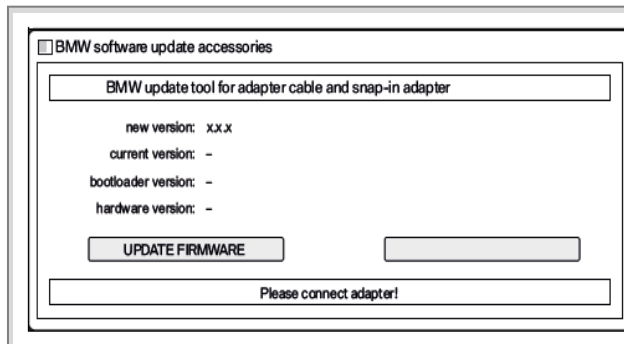
Please enter the web-address: bmw.com/bluetooth
Then click on the tab "Update Accessories".


On the webpage you will find a description of the software update of the accessories. After accepting the terms and conditions of use, the software update can be started.

Software Update für Windows XP, 7 und 8

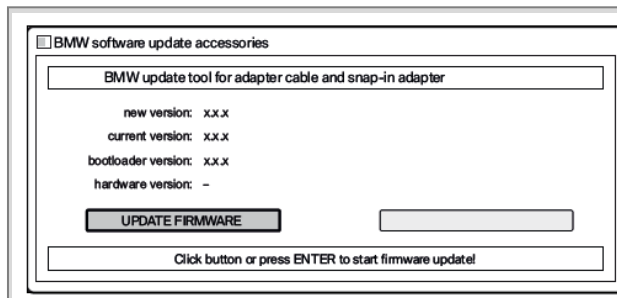


Please click "Extract" to start the process.



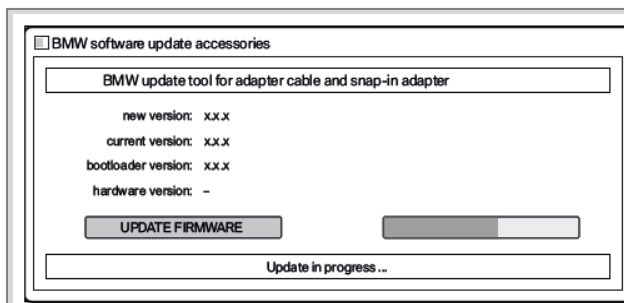
 To avoid damaging the circuit board when inserting/removing the micro USB connector do not wiggle the micro USB connector (keep it as straight as possible).

If your snap-in adapter is not already connected to your computer, please connect it now.

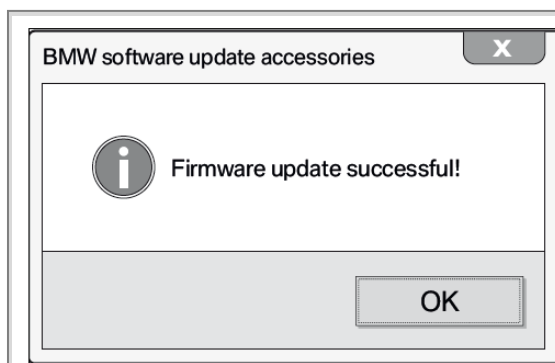


Then click the button "Update Firmware" or press

ENTER to start the software update.



Wait until the update is completed.

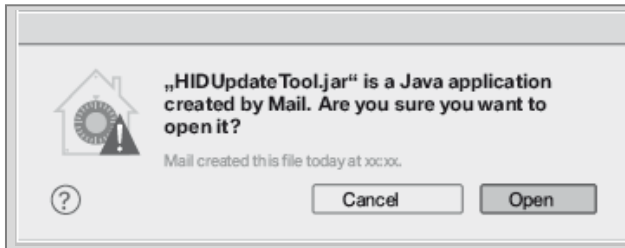


This message appears when the update is finished.

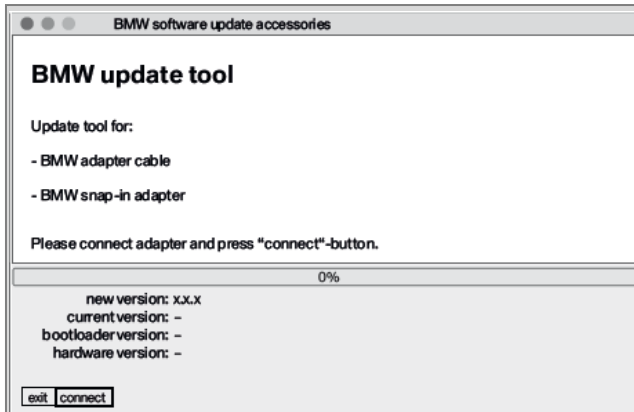
Press "OK".


The update is now complete.

Software Update für Mac ab OS10.8



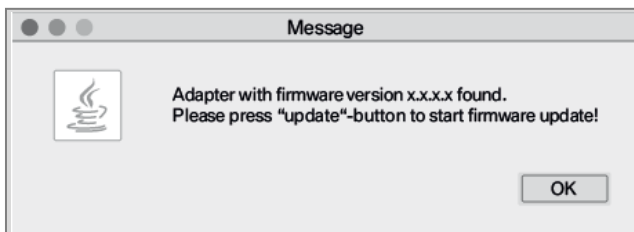
Click the button "Open".



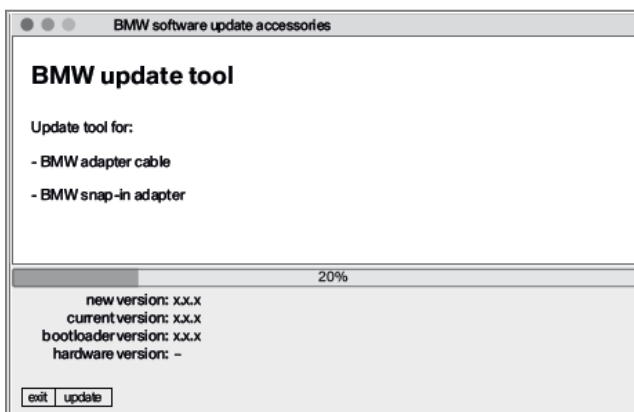
 To avoid damaging the circuit board when inserting/removing the micro USB connector do not wiggle the micro USB connector (keep it as straight as possible).

If your snap-in adapter is not already connected to your computer, please connect it now.

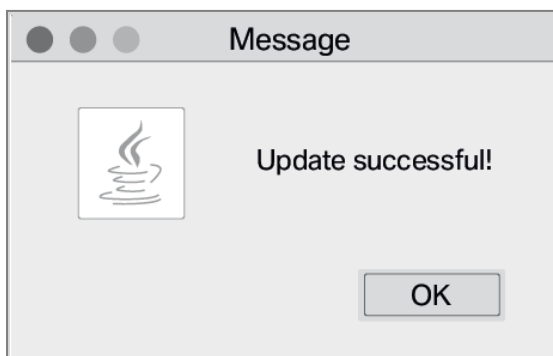
Then click the button "connect".



Then click the button "OK".



Wait until the update is completed.



This message appears when the update is finished. Press "OK".

The update is now complete.